

JOURNAL OF THE AMERICAN PHARMACEUTICAL ASSOCIATION

VOL. XXVI

JUNE, 1937

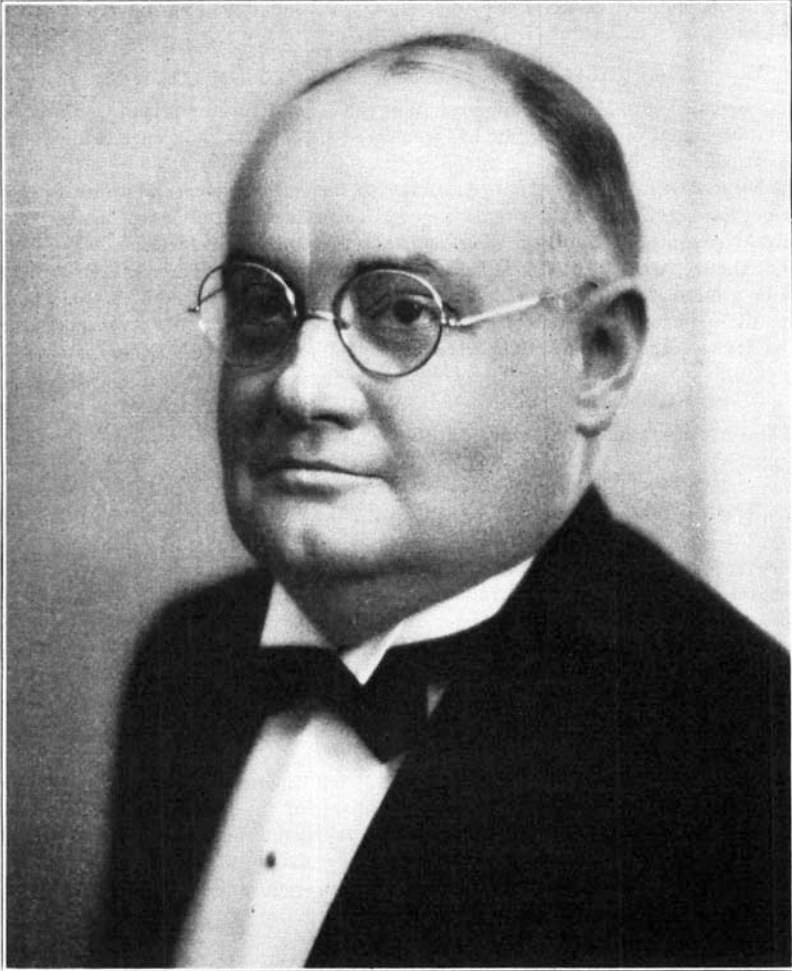
No. 6

GEORGE A. MOULTON.

George A. Moulton, president of the National Association Boards of Pharmacy, was born in Lewiston, Me., son of George A. and Anna A. (née Frieze) Moulton.

His early education was received in the grade schools of Lewiston and the high school of Palmer, Mass. He entered Central Maine Hospital for medical training, later changing to Lawrence General Hospital and then he matriculated at Massachusetts College of Pharmacy. He received the degree of P.D. and later, Ph.C. He served as president of his class and edited a "Syllabus on Materia Medica," published by his class. Prior to graduation he was employed with Irving P. Gammon and Lyman W. Griffin, and on graduation, engaged with Nelson S. Whitman of Nashua, N. H. He bought the pharmacy he now operates in Peterborough, N. H., in 1917.

He joined the State Association and the AMERICAN PHARMACEUTICAL ASSOCIATION in 1915. He prepared and put into operation the "New Hampshire Plan." He edits the Association bulletins, the "President's Letters" and is Commissioner of Pharmacy of New Hampshire. President Moulton served as vice-president for two terms of District No. 1, N. A. B. P., he was secretary of the Section on Education and Legislation, A. Ph. A., in 1936 and vice-chairman in 1937. He is a member of the N. A. R. D. and has served on important committees. He is a former president of the Rotary Club, member of Unitarian Laymens League and Parent Teacher Organization. Mr. and Mrs. Moulton have two sons—one a sophomore in high school, and the other a student in Massachusetts College of Pharmacy.



GEORGE A. MOULTON.